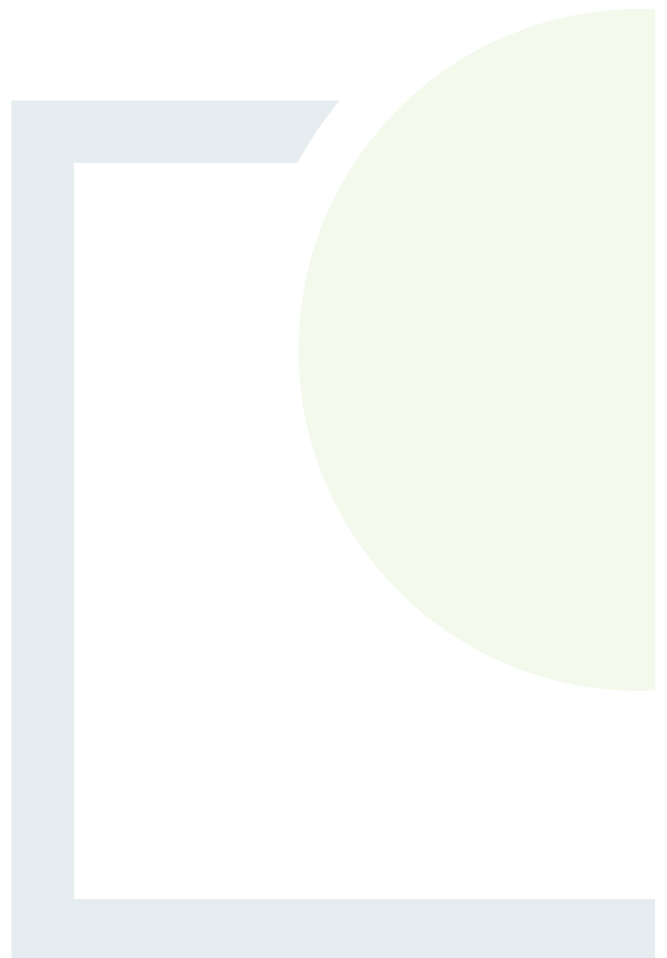




CONSULTANTS IN ENGINEERING,  
ENVIRONMENTAL SCIENCE  
& PLANNING

## APPENDIX 9.4

Releve Survey Report





**Relevé surveys September 2021. Refer to Figure 1 for Location of Relevés.**

**Relevé 1 - E623495 N609551**

**HH3- [LINKS TO ANNEX 1](#)**

Species	Percentage cover (%)
Ling heather	65
Heath plait-moss	50 – ground layer
Cotton grass	8
Purple moor grass	5
Common tormentil	5
Cross leaved heath	5
toad rush	5
Bare ground	5
Cladonia portentosa	2



**Relevé 2 - E623905 N610492**

**HH3 - NO LINKS TO ANNEX 1 DUE TO LACK OF E. tetralix**

See *Relevé 14*

**Relevé 3 - E624860 N609551 NO LINKS TO ANNEX 1 DUE TO BURNING AT TIME OF SURVEY**

*No access, burning at time of survey*





**Relevé 4 - E624412 N608475**

**HH1 - NO LINKS TO ANNEX 1 DUE TO >10% *P. aquilinum***

Bracken	30
Ling heather	30
Purple moor grass	15
Heath plait-moss	10
Common cottongrass	5
Yorkshire fog	3
Burnt heather	3
Red fescue	2
Bilberry	2



Relevé 5 - E624059 N609885

HH3 - **NO LINKS TO ANNEX 1 DUE TO ABSENCE OF E. TETRALIX**

Species	Percentage cover (%)
Ling heather	30
Purple moor grass	25
Cotton grass	25
Yorkshire fog	10
Common tormentil	4
Heath plait- moss	4
Bilberry	2





**Relevé 6 - E624059 N609885**

**HD1 - NO LINKS TO ANNEX 1**

Species	Percentage cover (%)
Bracken	60
Purple moor grass	17
Yorkshire fog	7
Ling heather	6
Soft rush	4
Heath plait moss	3
Common tormentil	2
Cross leaved heath	1



**Relevé 7 - E625661 N607832**

**HD1 - NO LINKS TO ANNEX 1**

*See Relevé 6*





Relevé 8 - E623723 N609271

**HH3- NO LINKS TO ANNEX 1 DUE TO >10% BARE GROUND**

Species	Percentage cover (%)
Ling heather	35
Bare ground	25
Heath plait-moss	15
Cross leaved heath	5
Cotton grass	5
Burnt heath	4
Carnation sedge	4
Yorkshire fog	3
Purple moor grass	2
Common tormentil	2



Relevé 9 - E624618 N610033

**HH3- NO LINKS TO ANNEX 1 DUE TO BURNING AT TIME OF SURVEY**

*No access, burning during survey*

Relevé 10 - E626022 N607984



**HD1 - NO LINKS TO ANNEX 1**

*See Relevé 6*

**Relevé 11 - E624800 N607945**

**HD1 -NO LINKS TO ANNEX 1**

Bracken	70
Purple moor grass	6
Annual meadow grass	5
Yorkshire fog	5
Ling heather	4
Heath plait moss	4
Common tormentil	3
Cross leaved heath	2
Bilberry	1



**Relevé 12 - E624852 N608536**

**? NO ACCESS**

*Too steep to access*

**Relevé 13 - E624466 N608870**

**HH1 - NO LINKS TO ANNEX 1 DUE TO >10% P. aquilinum**

*See Relevé 4*



**Relevé 14 - E623655 N610218**

**HH3 – NO LINKS TO ANNEX 1 DUE TO LACK OF *E. tetralix***

Species	Percentage cover (%)
Sphagnum papillosum	65
Common cotton grass	45
Ling heather	15
Common tormentil	10
Sphagnum capillifolium	10
Purple moor grass	5
Soft rush	5
Common haircap moss	3





**Relevé 15 - E624349 N610137**

**HH3 - NO LINKS TO ANNEX 1 DUE TO ABSENCE OF E. TETRALIX**

*See Relevé 5*





Relevé 16 - E624171 N609381

HH3 - **NO LINKS TO ANNEX 1 DUE TO >1% NEGATIVE INDICATOR SPECIES**

Species	Percentage cover (%)
Ling heather	50
Purple moor grass	5
Common tormentil	5
Cross leaved heath	5
Heath plait-moss	5
Gorse	3
Common bent grass	2



Relevé 17 - E625223 N608624 **NO ACCESS**

*Too steep to access*

Relevé 18 - E624819 N608985 **NO ACCESS**

*Too steep to access*



Relevé 19 - E624540 N608083

GS4 - **NO LINKS TO ANNEX 1**

Species	Percentage cover (%)
Soft rush	40
Heath plait-moss	25
White clover	15
Annual meadow grass	5
Bramble	5
Bracken	5
Yorkshire fog	2
Red fescue	2
Broad dock	1



Relevé 20 - E625326 N608280 **NO ACCESS**

*Too steep to access*



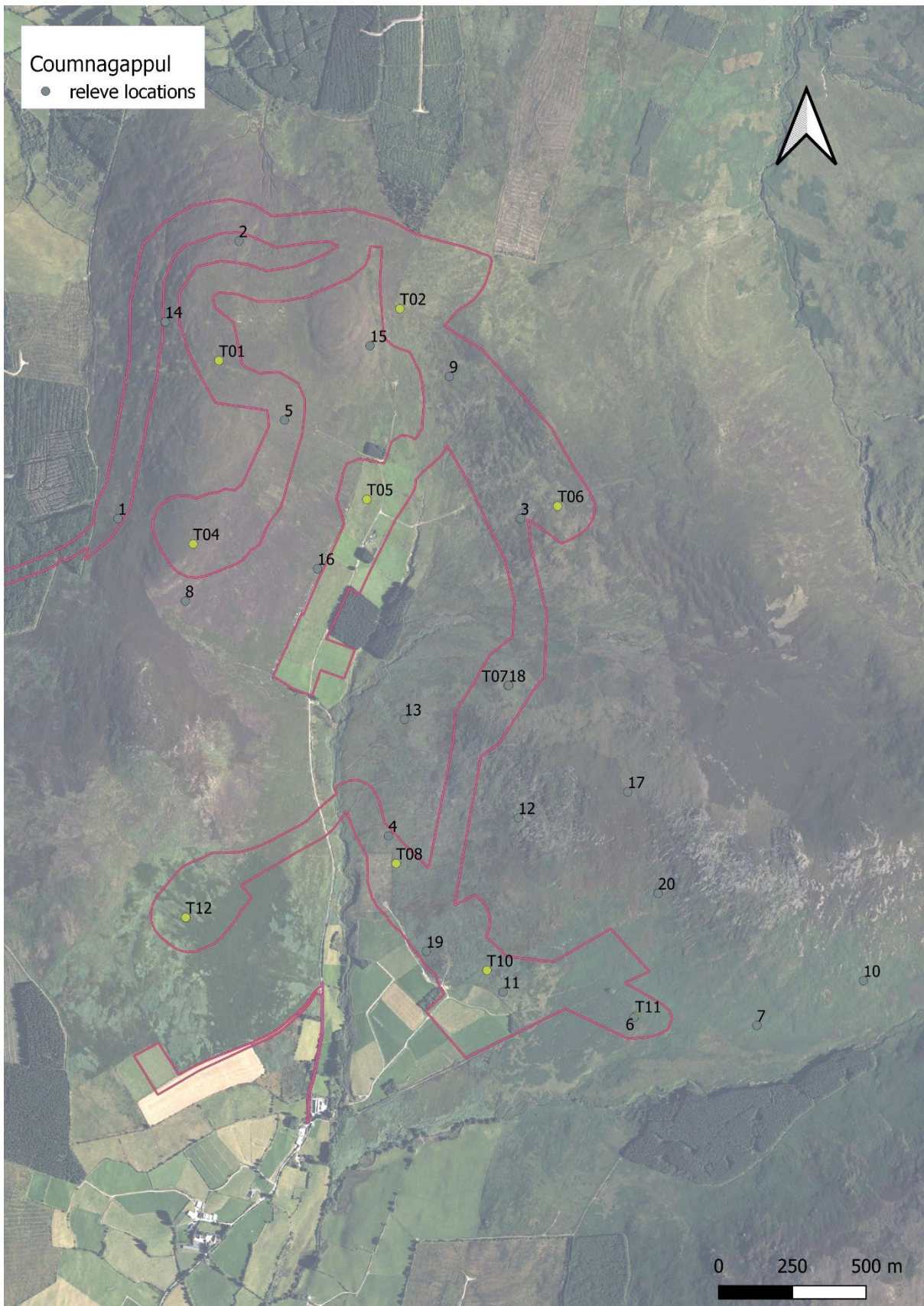


Figure 1 – Location of Relevés



**CONSULTANTS IN ENGINEERING,  
ENVIRONMENTAL SCIENCE  
& PLANNING**

**[www.fehilytimoney.ie](http://www.fehilytimoney.ie)**

---

 **Cork**

 **Dublin**

 **Carlow**

